



R.S. ARORA
RUBBER CORPORATION

**RUBBER
SHEETS
CATALOGUE**



www.rsarora.com



NATURAL RUBBER SHEET

NR or Natural Rubber Poly-isoprene is derived from latex liquid extracted from rubber trees. Originally cultivated in the Amazon region, it is now grown extensively in Southeast Asia, Africa, and India. This rubber has excellent mechanical properties, low compression, and high resilience. It also has excellent dynamic and rebound properties. The operating temperature range is from -50° C to +90° C. It is available in a wide range of hardness from 30° to 80° Shore A. Many of them have good resistance to acids, alkalis, and salts.

It is not recommended for use in areas where it could come in contact with oils and hydrocarbons. They are special-purpose high abrasion-resistant rubber sheets, made from premium quality dry Natural Rubber with outstanding resistance to cut, tear, and abrasion. These sheets are used for anti-abrasion rubber linings for material handling equipment in mines.

Applications:

- Skirt-board sheets
- Bridge bearing pads
- Shot blasting sheets
- Chute lining
- High tensile tan gum sheets
- Commercial sheets with & without cotton insertion



NATURAL RUBBER SHEETS - COMMERCIAL GRADE

Code	Hardness (+/-5) (Shore A)	Tensile Strength (kg/cm ²)	Elongation at Break (%)	Abrasion (mm ³ 10 N)	Compression Set at 70° C for 22 Hrs (%)	Temp. Range (°C)	Colour
ARORA Flex 60/65	60/65	50/80	300/380	400/450	55	-30 to +70	Black
NR 70/75	70/75	35	250	450	-	-30 to +70	Black

ABRASION RESISTANT RUBBER SHEETS

Code	Hardness (+/-5) (Shore A)	Tensile Strength (kg/cm ²)	Elongation at Break (%)	Abrasion (mm ³ 10 N)	Compression Set at 70° C for 22 Hrs (%)	Temp. Range (°C)	Colour
AB 45150	45	150	600	100	30	-25 to +70	Red / Yellow
AB 70175	70	175	350	120	35	-25 to +70	Black

SHIRTBOARD RUBBER SHEETS

Code	Hardness (+/-5) (Shore A)	Tensile Strength (kg/cm ²)	Elongation at Break (%)	Abrasion (mm ³ 10 N)	Compression Set at 70° C for 22 Hrs (%)	Temp. Range (°C)	Colour
ABE 55100	55	100	400	300	35	-25 to +70	Black

NATURAL RUBBER SHEETS - BEIGE/HONEY/TANGUM

Code	Hardness (+/-5) (Shore A)	Tensile Strength (kg/cm ²)	Elongation at Break (%)	Abrasion (mm ³ 10 N)	Compression Set at 70° C for 22 Hrs (%)	Temp. Range (°C)	Colour
TA 40100	40	100	450	150	35	-25 to +70	Beige/ Grey
NR 4075	40	75	500	350	40	-25 to +70	Red/ Pink

SBR FOOD GRADE RUBBER SHEETS

Code	Hardness (+/-5) (Shore A)	Tensile Strength (kg/cm ²)	Elongation at Break (%)	Abrasion (mm ³ 10 N)	Compression Set at 70° C for 22 Hrs (%)	Temp. Range (°C)	Colour
SB 60150	60	80	200	—	40	-30 to +70	White

MULTI PURPOSE RUBBER SHEET

Code	Hardness (+/-5) (Shore A)	Tensile Strength (kg/cm ²)	Elongation at Break (%)	Abrasion (mm ³ 10 N)	Compression Set at 70° C for 22 Hrs (%)	Temp. Range (°C)	Colour
MP 7040	70	40	225	—	40	-20 to +80	Black

Standard Dimensions

- Standard Length: 10 Mtr / 33 Ft / 11 Yard
- Standard Width: 1.2/1.4/1.5 Mtr / 4/4.6/4.92 Ft / 1.33/1.53/1.64 Yard

Note

1. Sheets can be supplied with 1 or 2-ply insertions in Cotton, Nylon, Polyester, Glass Fibre, etc.
2. One side or both sides smooth or fabric finish can be supplied.
3. Specifications are subject to change without notice.



TANGUM SHEET

A **Tangum Sheet** (also referred to as **Tangam Sheet** or **Tangon Sheet** in some regions) is a type of high-friction rubber or polymer-based sheet designed primarily for grip, cushioning, and wear resistance. These sheets are commonly used in conveyor systems, packaging equipment, and industrial machinery where non-slip performance is essential. Tangum Sheets typically have a rough, ribbed, or high-friction surface, making them ideal for handling inclined conveying and ensuring products stay in place during transport.

Key Features:

- **Material:** Special rubber or polymer blends (e.g., synthetic rubber or PVC compounds).
- **Surface:** Textured or ribbed for enhanced grip.
- **Thickness:** Typically ranges from 3 mm to 10 mm.
- **Hardness:** Medium to high Shore A (depending on application).
- **Color:** Generally black, though other colors may be available.
- **Temperature Resistance:** Around -10°C to +80°C (may vary by material).



TANGUM SHEET

Code	Hardness (+/-5) (Shore A)	Tensile Strength (kg/cm ²)	Elongation at Break (%)	Abrasion (mm ³ 10 N)	Compression Set at 70° C for 22 Hrs (%)	Temp. Range (°C)	Colour
TA 40100	40	100	450	150	35	-25 to +70	Beige/ Grey
NR 4075	40	75	500	350	40	-25 to +70	Red/ Pink

Applications of Tangum Sheet:

1. Inclined Conveyor Systems
2. Packaging Industry
3. Textile Industry
4. Printing Industry
5. Logistics and Warehousing
6. Agricultural Processing
7. Industrial Machinery

Advantages:

- High-friction surface improves grip.
- Durable and wear-resistant.
- Reduces product damage during handling.
- Versatile and can be custom-cut for specific equipment.
- Easy to install on existing conveyor or machine setups.

Standard Dimensions

- Standard Length: 10 Mtr / 33 Ft / 11 Yard
- Standard Width: 1.2/1.4/1.5 Mtr / 4/4.6/4.92 Ft / 1.33/1.53/1.64 Yard

Note

- Specifications are subject to change without notice.



SILICONE RUBBER SHEET

Silicone Rubber is physiologically inert, thus making it the preferred choice of medical, pharmaceutical, and food processing industries. Silicone has comparatively low mechanical properties, tensile strength, elongation, and tear strength; however, they remain constant even at high temperatures but should not be used with high-pressure steam. Its resistance to oil and hydrocarbon products is pretty limited and similar to that of Chloroprene rubbers. It has reasonable resistance to various general chemical products, but acids, alkalis, esters, and kerosene should be avoided.

Silicone has excellent heat resistance (dry air), at +200°C intermittent. It remains flexible at low temperatures of -70°C and is also resistant to ultraviolet light, ozone, and weathering. It exhibits low inflammability and low smoke toxicity and has good electrical insulation properties.



SILICONE RUBBER SHEETS

Code	Hardness (+/-5) (Shore A)	Tensile Strength (kg/cm ²)	Elongation at Break (%)	Compression Set at 70° C for 22 Hrs (%)	Temp. Range (°C)	Colour
SI 5090	50	90	250	40	-90 to +200	Translucent
SI 6060	60	60	250	40	-90 to +200	Red / White

Applications:

1. High-Temperature Gaskets and Seals
2. Thermal & Electrical Insulation Pads
3. Vacuum Press Membranes (Composites & Laminates)
4. Non-Stick Surfaces (Food & Industrial Use)
5. Padding, Cushioning & Shock Absorption

Standard Dimensions

- Standard Length: 10 Mtr / 33 Ft / 11 Yard
- Standard Width: 1.2/1.4/1.5 Mtr / 4/4.6/4.92 Ft / 1.33/1.53/1.64 Yard

Note

1. One side or both sides smooth or fabric finish can be supplied.
2. Specifications are subject to change without notice.



DIAPHRAGM RUBBER INSERTIONS

Diaphragm Rubber Insertions are specialized rubber sheets reinforced with one or two plies of high-strength Nylon fabric, engineered specifically for applications requiring durability, flexibility, and chemical resistance. These sheets are manufactured using premium-grade Nitrile Rubber (NBR), known for its excellent resistance to oils, LPG, fuels, and various solvents, ensuring long-lasting performance even under harsh operating conditions.

The fabric reinforcement enhances the tensile strength and dimensional stability of the rubber sheet, allowing it to withstand repeated flexing and pressure fluctuations without failure. Available in 1-ply and 2-ply Nylon fabric constructions, these sheets are ideal for use in diaphragms for control valves, pressure regulators, pumps, actuators, and other differential pressure systems.

Their high mechanical strength combined with excellent sealing properties make them suitable for dynamic applications where precise control of gas or fluid flow is critical. These diaphragm sheets are widely used in industries such as automotive, oil and gas, chemical processing, pneumatic systems, and fluid control equipment.



DIAPHRAGM RUBBER INSERTIONS

Code	Hardness (+/-5) (Shore A)	Tensile Strength (kg/cm ²)	Elongation at Break (%)	Abrasion (mm ³ 10 N)	Compression Set at 70° C for 22 Hrs (%)	Volume Swell at 40°C/22hrs /Full B(%Max)	Temp. Range (°C)	Colour
DS 60100	60/70	100	300	200	25	25	-30 to +110	Black

Applications:

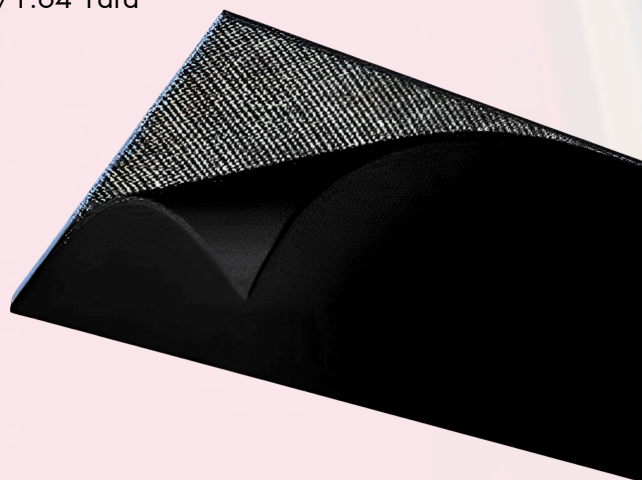
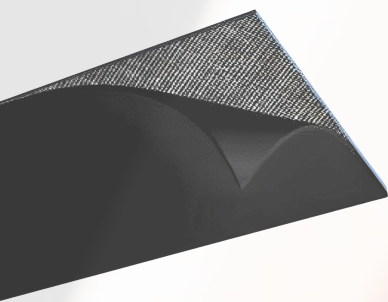
- Industrial Pumps & Valves
- Automotive & Engine Systems
- Pneumatic & Hydraulic Systems
- Air & Gas Control Equipment
- Chemical Processing & Fluid Handling

Standard Dimensions

- Standard Length: 10 Mtr / 33 Ft / 11 Yard
- Standard Width: 1.2/1.4/1.5 Mtr / 4/4.6/4.92 Ft / 1.33/1.53/1.64 Yard

Note

1. One side or both sides smooth or fabric finish can be supplied.
2. Specifications are subject to change without notice.

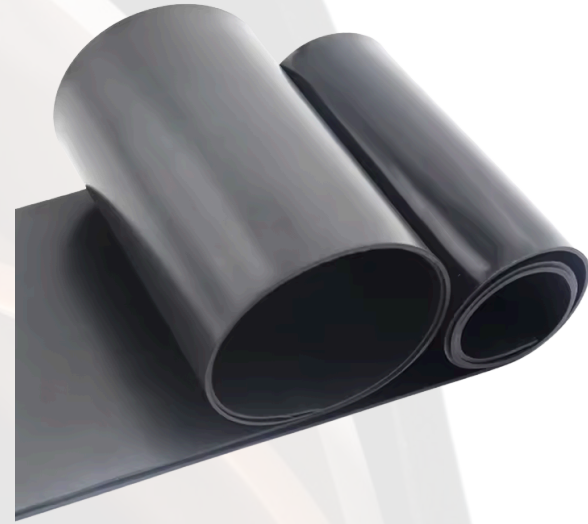


NITRILE RUBBER SHEET

Nitrile Rubber or Acrylonitrile Butadiene Rubber is a co-polymer of butadiene and acrylonitrile. It has good general resistance to oil along with good mechanical properties, especially tensile strength, flexing, compression set, and impermeability to gases. It has moderate aging properties and good adhesion to metal. Its recommended operating temperature range is -30°C to +120°C. It also displays a good resistance to inorganic chemical products except antioxidant agents and chlorine. It gives satisfactory resistance to general hydrocarbons. Due to its polar nature, we do not recommend its use with polar liquids like ketones, ethers, and amines.

Applications:

- Oil & Fuel Resistant Seals and Gaskets
- Industrial and Hydraulic Systems
- Automotive Industry
- Oil & Gas Industry
- Food Processing (Special Grades)
- Protective Padding & Liners
- Chemical & Solvent Handling



NITRILE RUBBER SHEETS - SPECIAL GRADE

Code	Hardness (+/-5) (Shore A)	Tensile Strength (kg/cm ²)	Elongation at Break (%)	Abrasion (mm ³ 10 N)	Compression Set at 70° C for 22 Hrs (%)	Change in Volume at ASTM Oil No 3 70°C/72 Hrs(%)	Temp. Range (°C)	Colour
Arora Trile 6050	60/70	50	250/300	300	50	75	-30 to +90	Black

FOOD GRADE RUBBER SHEET

Code	Hardness (+/-5) (Shore A)	Tensile Strength (kg/cm ²)	Elongation at Break (%)	Abrasion (mm ³ 10 N)	Compression Set at 70° C for 22 Hrs (%)	Change in Volume at ASTM Oil No 3 70°C/72 Hrs(%)	Temp. Range (°C)	Colour
Arora NB 6050	60	50	250/300	300	50	75	-30 to +90	Black

Standard Dimensions

- Standard Length: 10 Mtr / 33 Ft / 11 Yard
- Standard Width: 1.2/1.4/1.5 Mtr / 4/4.6/4.92 Ft / 1.33/1.53/1.64 Yard

Note

1. One side or both sides smooth or fabric finish can be supplied.
2. Specifications are subject to change without notice.



NEOPRENE RUBBER SHEET

Chloroprene (Neoprene®) Rubber Sheets CR or Chloroprene is a homopolymer of chloroprene or chlorobutadiene. It has excellent mechanical and abrasion properties even without reinforcing fillers and reasonable resilience in grades over 60° shore A. It displays good resistance to heat, ozone, and weathering and also gives good adhesion to metal. The recommended operating temperature range is between -40°C and +125°C. It has good resistance to inorganic hydrocarbons. We also offer flame retardant grades.

Due to its versatile properties, Neoprene rubber sheets are widely used in a variety of industrial and commercial applications. Common uses include:



- **Gaskets and Seals:** Ideal for sealing applications in automotive, marine, and industrial settings due to its resistance to oils and weathering.
- **Protective Padding and Liners:** Used in construction, sports, and protective equipment for its cushioning and shock-absorbing qualities.
- **Weather Stripping and Insulation:** Employed in HVAC systems and construction for insulation and weatherproofing.
- **Automotive Components:** Suitable for hoses, belts, and vibration mounts where oil and temperature resistance are essential.
- **Marine Applications:** Its resistance to salt water and UV makes it ideal for dock bumpers, hatch seals, and protective covers.
- **Electrical Insulation:** Often used for cable jackets and insulating mats due to its moderate flame resistance and dielectric strength.
- **General Industrial Use:** Used in conveyor belts, machine mounts, and expansion joints where moderate chemical and abrasion resistance is required.

Neoprene sheets are available in various hardness and thickness ranges and can be customized with smooth or fabric finishes on one or both sides, depending on the end use.

NEOPRENE RUBBER SHEETS - COMMERCIAL GRADE

Code	Hardness (+/-5) (Shore A)	Tensile Strength (kg/cm ²)	Elongation at Break (%)	Abrasion (mm ³ 10 N)	Compression Set at 70° C for 22 Hrs (%)	Oil Swell in ASTM Oil 903 (%)	Temp. Range (°C)	Colour
Arora NE 6570	65/55	70	300	—	50	55%	-25 to +100	Black
Arora NE 7040	60/70	40	250	—	45	90%	-35 to +80	Black

Standard Dimensions

- Standard Length: 10 Mtr / 33 Ft / 11 Yard
- Standard Width: 1.2/1.4/1.5 Mtr / 4/4.6/4.92 Ft / 1.33/1.53/1.64 Yard

Note

1. One side or both sides smooth or fabric finish can be supplied.
2. Specifications are subject to change without notice.

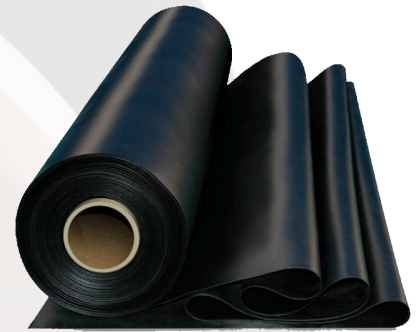


EPDM RUBBER SHEET

EPDM or Ethylene Propylene Diene Monomer has an excellent operating temperature range of -45°C to +120°C. It is highly recommended for outdoor uses as it is extremely resistant to oxidation, UV rays, and ozone. However, EPDM does not have good oil resistance or adhesion properties. It is resistant to many chemicals and solvents and highly resistant to many corrosive chemicals. It is also used for roofing sheets and weather strips.

Applications:

- **Roofing Membranes** – Flat roofs in commercial and residential buildings
- **Seals and Gaskets** – Automotive doors, windows, and industrial machinery
- **Weather Stripping** – Windows, doors, and outdoor enclosures
- **Pond and Pool Liners** – Artificial ponds, water gardens, and swimming pools
- **Vibration Dampening Pads** – Under heavy industrial equipment or HVAC systems



EPDM RUBBER SHEET - COMMERCIAL GRADE

Code	Hardness (+/-5) (Shore A)	Tensile Strength (kg/cm ²)	Elongation at Break (%)	Compression Set at 70° C for 22 Hrs (%)	Temp. Range (°C)	Colour
Arora EP100	60	80	300	50	-30 to +100	Black

EPDM RUBBER SHEET - SPECIAL GRADE

Code	Hardness (+/-5) (Shore A)	Tensile Strength (kg/cm ²)	Elongation at Break (%)	Compression Set at 70° C for 22 Hrs (%)	Temp. Range (°C)	Colour
Arora EP5090	50/60	90	300	30	-30 to +130	Black
Arora EP5090	65/70	80	300	30	-30 to +120	Black

EPDM RUBBER SHEET - FOOD GRADE

Code	Hardness (+/-5) (Shore A)	Tensile Strength (kg/cm ²)	Elongation at Break (%)	Compression Set at 70° C for 22 Hrs (%)	Temp. Range (°C)	Colour
Arora EP6050	60	50	300	40	-25 to +140	Black

Standard Dimensions

- Standard Length: 10 Mtr / 33 Ft / 11 Yard
- Standard Width: 1.2/1.4/1.5 Mtr / 4/4.6/4.92 Ft / 1.33/1.53/1.64 Yard

Note

1. One side or both sides smooth or fabric finish can be supplied.
2. Specifications are subject to change without notice.



ABRA SUPER RUBBER SHEET

Abra-Super® Rubber sheets use premium-grade natural rubber engineered for exceptional abrasion, impact, and corrosion resistance. The Abra-Super® range is designed to perform in the most demanding conditions, offering unmatched wear resistance in environments where conventional rubber sheets would fail prematurely. Our advantage in the industry comes from decades of refined manufacturing processes that ensure each sheet delivers consistent durability, flexibility, and resilience. Through rigorous quality control and the use of high-performance natural rubber compounds, we produce materials that outperform many synthetic and natural alternatives. Pure natural rubber, the base of Abra-Super®, is renowned for its high tensile strength, superior elongation, and exceptional resilience, making it one of the best materials for abrasion-intensive applications. The combination of these mechanical properties with excellent cut and tear resistance ensures prolonged service life, reducing maintenance and downtime.



Applications of Abra-Super® Rubber Sheets:

- **Mining & Quarrying:** Ideal for lining chutes, hoppers, and transfer points where ore, gravel, and other abrasive materials cause high wear rates.
- **Material Handling Equipment:** Used in conveyor skirting, impact pads, and wear strips for equipment handling.
- **Cement & Aggregate Industries:** Effective as liner sheets for silos & mixers exposed to sharp & aggressive particles.
- **Slurry Handling Systems:** Suitable for pipes, pump liners & tanks in mining & mineral processing where abrasive slurries are common.
- **Shot Blasting and Sandblasting Chambers:** Protects walls and floors from high-speed particulate impact.
- **Agriculture & Fertilizer Plants:** Provides wear protection in areas with repeated material flow or equipment movement.
- **Steel & Foundry Plants:** Acts as a buffer and lining material in areas subjected to thermal and mechanical abrasion.

HIGH ABRASION RESISTANT RUBBER SHEETS

Code	Hardness (+/-5) (Shore A)	Tensile Strength (kg/cm ²)	Elongation at Break (%)	Abrasion (mm ³ 10 N)	Compression Set at 70° C for 22 Hrs (%)	Temp. Range (°C)	Colour
ABRA Super - 40	38	240	810	120	15	-30 to +70	Pink / Blue / Orange
ABRA R 60	60	270	700	110	20	-40 to +70	Red

Standard Dimensions

- Standard Length: 10 Mtr / 33 Ft / 11 Yard
- Standard Width: 1.2/1.4/1.5 Mtr / 4/4.6/4.92 Ft / 1.33/1.53/1.64 Yard

Note

1. Sheets can be supplied with 1 or 2-ply insertion/s in Cotton, Nylon, Polyester, Glass Fibre, etc.
2. One side or both sides smooth or fabric finish or buffed finish can be supplied.
3. Specifications are subject to change without notice.



SHOT BLASTING RUBBER SHEET

CHOICE OF COLOUR | IMPACT RESISTANT | WEAR RESISTANT | NATURAL RUBBER



Aroratuff Shot Blasting Rubber Sheet is a blended natural and synthetic rubber sheet that offers tear and impact resistance, as well as high elasticity. It has excellent resistance to large particle impact and abrasion. It is also resistant to some mild chemicals, such as acids and alkalis. Our Shot Blasting Rubber Sheet has outstanding physical properties, including high mechanical strength and cut and tear resistance, making it suitable for shot blasting applications. It is available in a variety of choices depending on its hardness, specific gravity, colour, mechanical properties & surface finish



Applications:

Aroratuff Shot Blasting Rubber Sheet has been designed primarily for use as an impact and wear-resistant rubber sheet for shot blasting applications. Typical applications include:

- Heavy-duty skirting rubber
- Impact curtains
- Dust sealing curtains and skirts
- Dust deflectors
- Chassis rubbers
- A variety of sealing applications
- Lagging of Conveyor Pulleys

Inquiry/Ordering Info

- Thickness x Width x Length *
- Hardness *
- Specific Gravity *
- Colour *
- Surface Finish *
- Tensile Strength & Elongation *
- Total Quantity Required *
- Abrasion Resistance *

TECHNICAL INFORMATION

Product Code	Polymer	Sp. Gravity	Hardness (Shore A)	Tensile Strength (kg/cm ²)	Elongation at Break (%)	Abrasion (mm ³ 10 N)	Temp. Range (°C)	Colour
RSA11555P	NR/PBR	1.15	55° ± 5°	15 MPa	450%	70	-20 to +70	Black
RSA11040P	NR/PBR	1.10	40° ± 5°	17 MPa	500%	85	-20 to +70	Pink
RSA13560S	NR	1.35	60° ± 5°	8 MPa	300%	150	-20 to +70	Black
RSA13050S	NR	1.30	50° ± 5°	10 MPa	400%	125	-20 to +70	Beige
RSA CD	NR/PBR	1-1.60	40° ± 5° to 70° ± 5°	3 - 25 MPa	200-750%	70 - 400	-20 to +70	Any

SIZE: 3MM THICKNESS

Standard Dimensions

- Standard Length: 3mm, 4.5mm, 6mm, 8mm, 10mm, 12mm
- Standard Roll Size: 1200mm x 10mtrs for up to 12mm
- Standard Finish: One Side Smooth / Other Side Fabric Finish (SF)

Note

- Cut Lengths, Strips, Custom Shapes, Surface finishes, and colours are available upon request.

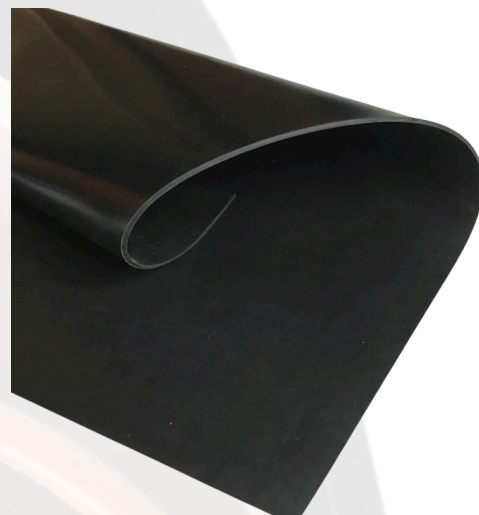


www.rsarora.com

VITON RUBBER SHEET

Fluoro Elastomer Rubber Sheets (Viton®)

Fluoro Elastomer rubber is based on hexafluoropropylene vinylidene fluoride. The polymer has high resistance to heat with a temperature range of -40°C to +250°C. It also possesses good flame resistance and is usually self-extinguishing. FKM's have excellent resistance to oxygen, ozone, and natural weathering and also have outstanding resistance to compression, especially at elevated temperatures. Its resistance to most solvents and chemicals gives a long service life as it has excellent resistance against hydrocarbons, aliphatic, aromatic, and chlorinated chemicals and resistance to acids and alkalis including oxidants. However, they have poor performance against ethers, ketones, and bases.



Applications of Fluoro Elastomer Rubber Sheets (Viton®)

Fluoro Elastomer (Viton®) rubber sheets are widely used in highly demanding environments where extreme heat, aggressive chemicals, and atmospheric degradation are prevalent. Their outstanding resistance to a broad range of harsh conditions makes them ideal for the following applications:

- **Aerospace Industry:** Used in fuel systems, gaskets, and O-rings where exposure to aviation fuels, hydraulic fluids, and elevated temperatures is common.
- **Automotive Sector:** Preferred in manufacturing fuel hoses, seals, and gaskets for engines and transmission systems due to resistance to oils, fuels, and extreme heat.
- **Chemical Processing Plants:** Ideal for lining tanks, pipes, and valves that carry aggressive chemicals such as acids, alkalis, and chlorinated solvents.
- **Oil & Gas Industry:** Utilized in seals, packings, and expansion joints in drilling equipment, refineries, and storage tanks that handle crude oil and refined fuels.
- **Pharmaceutical & Food Processing:** Suitable for seals and gaskets where chemical sterilization and clean-in-place (CIP) procedures are frequent.
- **Power Generation:** Used in turbine and generator systems requiring materials that withstand high temperatures and resist degradation from lubricants and solvents.
- **Electronics & Electrical Applications:** Offers insulation, and protective covers in devices exposed to harsh environments or chemicals.
- **Marine Applications:** Used in components exposed to saltwater and fuels, ensuring long service life and reliability.

VITON RUBBER SHEETS

Code	Hardness (+/-5) (Shore A)	Tensile Strength (kg/cm ²)	Elongation at Break (%)	Compression Set at 70° C for 22 Hrs (%)	Temp. Range (°C)	Colour
ARORA V 7050	70	5	200	45	-30 to +250	Black

Standard Dimensions

- Standard Length: 10 Mtr / 33 Ft / 11 Yard
- Standard Width: 1.2/1.4/1.5 Mtr / 4/4.6/4.92 Ft / 1.33/1.53/1.64 Yard

Note

1. One side or both sides smooth or fabric finish or buffed finish can be supplied.
2. Specifications are subject to change without notice.

PVC ROUGH TOP BELT

Description:

A PVC Rough Top Conveyor Belt is a type of conveyor belt that features a textured or patterned surface, typically with a rough or ribbed top cover made of polyvinyl chloride (PVC). This rough surface provides high friction and grip, making it ideal for transporting items on inclined or sloped surfaces.

Key Features:

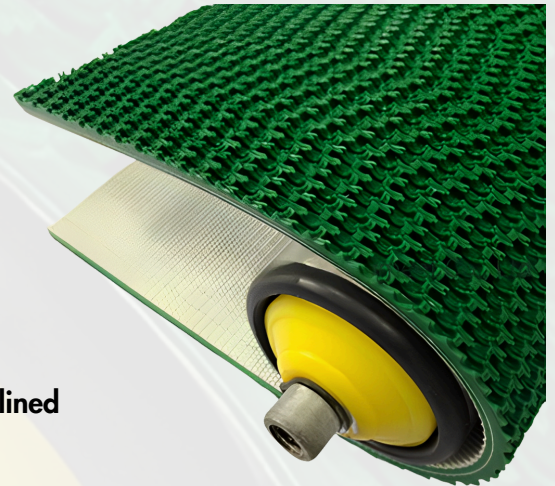
- **Material:** Polyvinyl chloride (PVC) top cover with fabric (usually polyester) backing.
- **Top Surface:** Rough-textured (ribbed or patterned) for enhanced grip.
- **Bottom Surface:** Smooth or fabric for easy tracking and driving.
- **Thickness:** Typically ranges from 3 mm to 10 mm.
- **Color:** Commonly green, black, or brown.
- **Operating Temperature:** Usually -10°C to $+80^{\circ}\text{C}$.



Applications:

PVC rough top conveyor belts are widely used in applications where non-slip conveying is essential. Some common uses include:

1. **Packaging Industry:**
 - a. Moving packed boxes, cartons, and bags.
 - b. Ensuring grip on inclined packaging lines.
2. **Logistics and Warehousing:**
 - a. Conveying parcels and packages in distribution centers.
 - b. Used in sorting systems and loading docks.
3. **Food Processing (Dry Areas):**
 - a. Transporting packaged food or non-perishable items.
 - b. Suitable for bakery lines, excluding direct food contact.
4. **Airport Baggage Handling:**
 - a. It would be great if you could secure a grip on inclined conveyors for baggage transport.
5. **Agriculture:**
 - a. Conveying produce in sorting and packing plants.
 - b. Handling sacks of grains or seeds.
6. **Textile and Clothing Industry:**
 - a. Transporting finished garments or fabric rolls on inclined belts.
7. **Automotive Industry:**
 - a. Moving parts and components during assembly or packaging.



Advantages:

- Excellent grip reduces slippage.
- Durable and wear-resistant.
- Lightweight and easy to install.
- Cost-effective for general conveying needs.

COTTON CANVAS BELT

Description:

A Cotton Canvas Belt is a type of flat conveyor belt or transmission belt made from woven cotton fabric layers (canvas), often impregnated with a compound like rubber or PVC to enhance strength, flexibility, and durability. These belts are eco-friendly, antistatic, and suitable for light to medium-duty applications.

Key Features:

- **Material:** 100% cotton or cotton-polyester canvas fabric.
- **Construction:** Multiple plies (e.g., 2-ply, 3-ply) stitched or bonded together.
- **Finish:** May be untreated (plain) or treated with rubber, PVC, or oil-resistant coatings.
- **Thickness:** Varies from 3 mm to 10 mm depending on ply and coating.
- **Color:** Generally off-white, beige, or green (if coated).
- **Temperature Range:** -20°C to +80°C (depending on coating).



Applications:

1. **Textile Industry:**
 - Used for conveying garments, fabrics, and yarn spindles.
 - Gentle on soft and delicate materials.
2. **Food Processing:**
 - Suitable for dry, packaged food conveying (when uncoated).
 - Common in bakeries, flour mills, and tea processing units.
3. **Pharmaceutical & Packaging:**
 - Antistatic and low-lint surface ideal for clean environments.
 - Used in light packaging lines and transfer conveyors.
4. **Tobacco Industry:**
 - Non-toxic and non-marking surface prevents contamination of leaves or products.
5. **Agricultural Applications:**
 - Handling grain, seeds, and lightweight sacks.
 - Gentle on products to avoid bruising.
6. **Printing Industry:**
 - Used in paper and packaging machinery for material feeding.
7. **Mechanical Power Transmission:**
 - Flat belt drive systems in older or low-speed machinery.



Advantages:

- Flexible and lightweight.
- Breathable (prevents moisture buildup).
- Quiet in operation and low vibration.
- Biodegradable and eco-friendly.
- Non-marking and suitable for delicate goods.



9393322500/600



www.rsarora.com

RUBBER HYGENIC BELT

(FOOD GRADE)

Description:

Rubber hygienic food-grade conveyor belts are specially designed for use in industries where cleanliness, hygiene, and compliance with food safety standards are crucial. These belts are made of high-quality rubber compounds that are non-toxic, non-porous, and resistant to fats, oils, and cleaning chemicals.

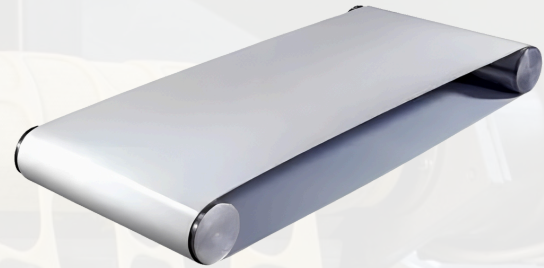
Key Features:

- **Food-Grade Quality:** Made from rubber compounds that meet FDA/USDA/EU food safety standards.
- **Non-Toxic & Odorless:** Safe for direct contact with food items.
- **Smooth or Textured Surface:** Designed to prevent food particles from sticking, allowing easy cleaning.
- **Resistance:** High resistance to water, oil, fat, and cleaning agents.
- **Antimicrobial Properties:** Optional coatings to reduce microbial growth.
- **Temperature Resistant:** Works efficiently in both hot and cold environments.
- **Anti-Stick & Non-Absorbent:** Does not absorb moisture or flavors, preventing contamination.
- **Flexible & Durable:** Suitable for both flat and trough conveying systems.

Applications:

Rubber hygienic food-grade belts are widely used across various segments of the food processing and packaging industry, including:

1. **Bakery and Confectionery:**
 - Handling dough, cakes, cookies, and bread
 - Chocolate coating lines & Sugar and flour conveying
2. **Meat & Poultry Processing:**
 - Conveying raw or packaged meats
 - Cutting and deboning lines & Freezing and cooking belt systems
3. **Seafood Industry:**
 - Washing, cutting, and packaging fish or seafood
 - Ice and salt handling systems
4. **Dairy Industry:**
 - Milk pouch conveyors
 - Cheese, butter, and curd production lines
5. **Fruits & Vegetables Processing:**
 - Sorting, grading, and washing lines
 - Blanching and drying systems
6. **Beverage & Bottling Plants:**
 - Bottle and can transport
 - Juice and soft drink processing
7. **Packaging & Weighing Systems:**
 - Food items going through metal detectors, checkweighers, and packaging machines



9393322500/600
www.rsarora.com

PVC POLYESTER BELT

Description:

PVC (Polyvinyl Chloride) Polyester Belts are lightweight, cost-effective conveyor belts with a polyester fabric core and a PVC coating on the surface. These belts are renowned for their versatility, ease of maintenance, and suitability for a wide range of applications in both industrial and food processing sectors.

Key Features:

- **Construction:** Polyester fabric carcass coated with PVC compound
- **Surface:** Available in glossy, matt, smooth, rough top, or patterned finishes
- **Thickness Range:** Typically from 1 mm to 8 mm
- **Working Temperature:** -10°C to $+80^{\circ}\text{C}$ (depending on grade)
- **Color Options:** Green, white (food-grade), blue, black, etc.
- **Anti-static and flame-retardant options are available**
- **Chemical Resistance:** Good resistance to water, oils, and mild chemicals
- **Easy to clean and low maintenance**

Applications:

PVC Polyester Belts are widely used across various industries for light to medium-duty conveying tasks:

1. **Food Processing (with Food-Grade PVC Belts)**
 - Fruit and vegetable sorting and processing
 - Bakery and confectionery lines
 - Meat and poultry handling
 - Dairy product packaging
 - Ready-to-eat and frozen food conveyors
2. **Packaging Industry**
 - Carton, box, and bag conveying
 - Checkweighers and metal detectors
 - Sealing and strapping machines
3. **Logistics & Warehousing**
 - Sorting and distribution conveyors
 - Airport baggage handling systems
 - Parcel and courier distribution
4. **Pharmaceutical & Cosmetic Industry**
 - Tablet and bottle conveyors
 - Sterile packaging lines
 - Quality inspection systems
5. **General Industrial Applications**
 - Textile and garment production lines
 - Wood, paper, and printing industries
 - Automotive part handling



9393322500/600
www.rsarora.com

ANTI-VIBRATION PADS

Description:

Anti-vibration pads are specially designed components made from rubber, elastomers, or composite materials that absorb and isolate vibrations, shocks, and noise generated by machines or equipment. Their main function is to enhance machine performance, prolong equipment life, and reduce structural damage caused by vibration.

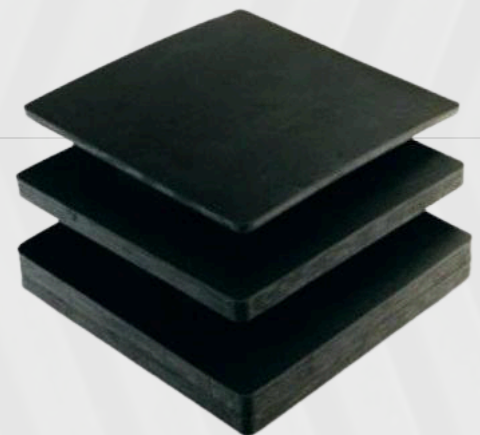
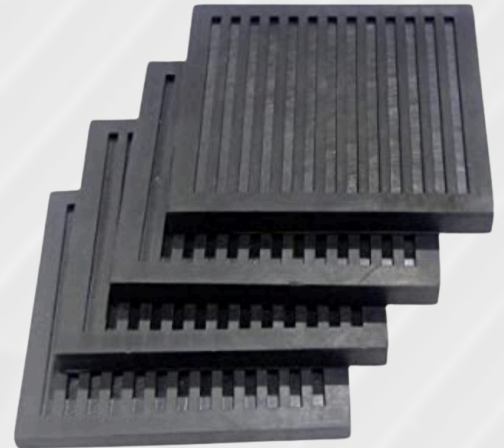
Key Features:

- **Vibration Isolation:** Reduces the transmission of vibration to the foundation or surrounding structure
- **Noise Reduction:** Minimizes sound propagation from machinery
- **Shock Absorption:** Protects machinery from sudden shocks or impacts
- **Anti-Slip Surface:** Prevents machine movement during operation
- **Load Bearing Capacity:** Can support a wide range of weights and pressures
- **Durable Material:** Made from high-quality rubber, neoprene, cork, EPDM, or composite laminates
- **Resistant to Oils & Chemicals:** Ideal for industrial environments
- **Easy to Install & Maintain:** No need for bolts or anchoring in many cases

Applications:

Anti-vibration pads are essential in various industrial, commercial, and domestic settings:

1. **HVAC Equipment:**
 - Under air conditioners, chillers, compressors, and duct fans are used to reduce noise and floor vibration
2. **Industrial Machinery:**
 - CNC machines, presses, lathes, grinders, and heavy-duty rotating machinery
 - Reduces wear, misalignment, and vibration-related breakdowns
3. **Automotive Industry:**
 - Used in engine mounts and body panels to absorb engine and road vibrations
4. **Precision Equipment:**
 - Laboratory instruments, testing machines, or optical devices are used to maintain accuracy and stability
5. **Generators & Pumps:**
 - Protects the foundation from continuous engine or pump vibrations
6. **Building Construction:**
 - Under base isolators or structural beams to protect buildings from minor seismic activities or internal vibrations





R.S.ARORA
RUBBER CORPORATION

**BIGGEST STOCKISTS OF
ALL KINDS OF RUBBER,
INDUSTRIAL,
SAFETY PRODUCTS**

**Address: 5-5-105/1, 2, 3, FIRST FLOOR, ARORA COMPLEX,
RANIGUNJ, SECUNDERABAD - 500003**

**E-mail: rsarorarub@yahoo.com,
rsarorarubbercorporation@gmail.com**

Mobile No: 9393322500/600

Customer care: 9848262500

Business WhatsApp: 6301422856

www.rsarora.com